



imes-icore[®]
Dental & Medical Solutions



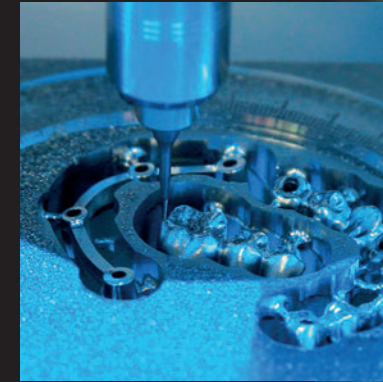
CORiTEC 650i

CORiTEC 650i/650i Loader

WITH FUTURE-ORIENTED TECHNOLOGY

We developed the CORiTEC 650i and CORiTEC 650i Loader machine systems for the area of PREMIUM machines and PREMIUM requirements. The systems are offered with very attractive pricing and are equipped with high-quality industrial milling technologies, such as granite structure, linear drives in the linear axes, torque motors in the rotary axes, as well as digital absolute length measuring systems, and powerful main spindles. The machine concept impresses with its precise, vibration-free and dynamic motion sequences in the demanding and complex metal working processes. All other relevant materials can also be milled or ground with high quality using this machine system.

The CORiTEC 650i loader includes a fully integrated automatic 16-fold blank changer. This enables you to operate the machine system at full capacity around the clock without supervision, while maintaining consistent high precision. Thus, the machine system is ideally suited for large labs and milling centers where these high-quality standards and large quantities are at the forefront.



WET

DRY

5 AX

6 mm
32x

16x

ION

16x

16x

16x

16x

16x

16x

16x

16x

16x

16x

16x

CORiTEC 650i

HIGHLIGHTS

- Solid axis construction made of polished natural granite for 5-axis simultaneous machining in high dynamics for high-precision milling results
- Absolute, high-resolution measuring systems in all axes (0.5 µm)
- High-frequency spindle up to 50.000 rpm and 3.2 kW power, with HSK 25 tool holder
- High precision due to integrated temperature compensation



PMMA	WAX	Standard	PreMilled Abutment	Dentures	Crown, Bridge	Inlay, Onlay, Veneer	Hybrid Abutment	Splint
Zr	COMPOSITE							
PEEK	SINT				Full Denture	Model	Drilling template	Model casting
Glass-ceramics	PreFab Abutments	C-Clamp	Block	zero-point clamping system				
CoCr	Ti				Bridge	Telescopic technology	Abutment	Hybrid machining

CORiTEC 650i Loader

HIGHLIGHTS

- Fully integrated automatic 16-fold blank changer
- Production around the clock
- Hybrid machining (Precise remilling of SLM work)
- Ideally suited for large labs and milling centers
- Absolute, high-resolution measuring systems in all axes (0.5 µm)
- High-frequency spindle up to 50.000 rpm and 3.2 kW power with HSK 25 tool holder
- High precision due to integrated temperature compensation

32-FOLD
TOOLCHANGER

WET AND DRY
PROCESSING

3.2 KW HIGH-FREQUENCY
SPINDLE WITH
HSK-25 TOOL HOLDER

LEADING LINEAR
AND TORQUE MOTOR
TECHNOLOGY

POWERFUL PERFORMANCE
high-resolution absolute-measuring
systems in all axes



ERGONOMIC
HANDLING
simple touchscreen
operating

MASSIVE GRANITE
AXLE STRUCTURE

FULLY INTEGRATED
AUTOMATIC 16-FOLD
BLANK CHANGER

AROUND THE CLOCK
full capacity

Water-cooled high-end spindle

PMMA	WAX	Standard	PreMilled Abutment	Dentures	Crown, Bridge	Inlay, Onlay, Veneer	Hybrid Abutment	Splint
Zr	COMPOSITE							
PEEK	SINT							
Glass-ceramics	PreFab Abutments	C-Clamp	Block	zero-point clamping system	Full Denture	Model	Drilling template	Model casting
CoCr	Ti							
					Bridge	Telescopic technology	Abutment	Hybrid machining

Applications & holder

C-CLAMP

- Enables 5-axis machining up to 90 degrees axis adjustment
- Extension of the technical possibilities of your milling machine
- End face machining



MANUFACTURE OF DENTAL PROSTHESES

- Dentsply Sirona Dentures



PREFABRICATED ABUTMENTS

- Short production times
- Production of abutments in very simple processes
- High accuracy of fit due to prefabricated implant interface

DESS
Abutmentholder



NT-Preform®
Abutment
(nt-trading)



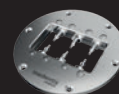
PreFace®
Abutment
(Medentika)



DDSoldiConnect®
(Dental Direkt)



MED-Preform®
Abutment
(medentis)



THERAPEUTIC SPLINTS

- Bite splints, bleaching splints
- Snoring splints, aligners
- Simple and high-quality implementation in CAD/CAM processes



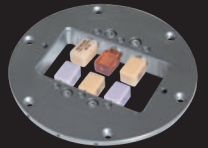
HYBRID MACHINING - SINTERING AND MILLING

- Milling post-processing of finished restorations using the SLM method
- High precision milling combined with low-cost SLM process
- Compatible with most SLM systems



GRINDING OF CAD/CAM BLOCKS

- New 6-fold adapter enables effective production
- Exchangeable strips for different adapter systems
- Crowns, onlays, inlays, veneers, bridge frameworks, etc.



IMPLANT-SUPPORTED BRIDGES AND BARS / ONE-PIECE ABUTMENTS

- Highest fitting accuracy due to new CAM technologies (ReFit)
- Stress-free fit even with larger spans
- Easy production due to high degree of automation with coordinated CAM software



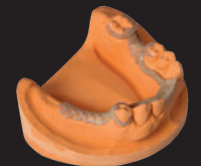
BIOHPP ELEGANCE PREFABS

- Individual hybrid abutment on PEEK basis
- BioHPP for permanent dentures, free of metal, oxide and monomer
- Homogeneous combination of titanium and BioHPP



MILLING OF MODEL CASTS

- Production in combustible materials, PEEK or directly in CoCr
- Allergy-free and lightweight model casting when using PEEK
- Cost-efficient



MILLED IMPLANT MODELS

- DIM (Digital Implant Model) from nt-trading
- Precisely positionable
- 2-part implant analog



MODEL MILLING

- Model fabrication in CAD/CAM process
- High reproducibility and precision
- Model fabrication with digital impression by intraoral scanner



T1/T6 - 3.0 | 6.0 mm
radius milling tool short (l = 15 mm)

T1	Ti
T6	CoCr

3,0 mm Ø 6 mm

up to 15 mm

Blades

Art.-No. 526029 3006

T11 - 2.5 | 6.0 mm
radius milling tool (single blade, slide coated)

T11	PMMA WAX PEEK
-----	---------------------

2,5 mm Ø 6 mm

up to 25 mm

Blade

Art.-No. 526004 2506

T14/T41/T51 - 1.0 | 6.0 mm
radius milling tool (diamond coated)

T14	Zr
T41	SINT
T51	COMP

1,0 mm Ø 6 mm

up to 25 mm

Blades

Art.-No. 526013 1006

T19 - 0.5 | 6.0 mm
shaft milling tool (l = 4 mm)

T19	UNIVERSAL
-----	-----------

0,5 mm Ø 6 mm

up to 15 mm

Blades

Art.-No. 526001 0506

T2/T7 - 2.0 | 6.0 mm
radius milling tool short (l = 12 mm)

T2	Ti
T7	CoCr

2,0 mm Ø 6 mm

up to 15 mm

Blades

Art.-No. 526029 2006

T11/T13 - 2.5 | 6.0 mm
radius milling tool

T11	PMMA WAX
T13	Zr

2,5 mm Ø 6 mm

up to 25 mm

Blades

Art.-No. 526019 2506

T15/T42/T52 - 0.6 | 6.0 mm
radius milling tool (conical)

T15	PMMA WAX Zr
T42	SINT
T52	COMP

0,6 mm Ø 6 mm

up to 25 mm

Blades

Art.-No. 526019 0606

T20 - 0.6 | 6.0 mm
radius milling tool (conical)

T20	Ti CoCr
-----	------------

0,6 mm Ø 6 mm

up to 15 mm

Blades

Art.-No. 526003 0606

T3/T8 - 1.5 | 6.0 mm
radius milling tool short (l = 12 mm)

T3	Ti
T8	CoCr

1,5 mm Ø 6 mm

up to 15 mm

Blades

Art.-No. 526029 1506

T12 - 1.0 | 6.0 mm
radius milling tool (single blade, slide coated)

T12	PMMA WAX PEEK
-----	---------------------

1,0 mm Ø 6 mm

up to 25 mm

Blade

Art.-No. 526004 1006

T16 - 1.5 | 6.0 mm
radius milling tool long (l = 15 mm)

T16	PMMA WAX PEEK
-----	---------------------

1,5 mm Ø 6 mm

up to 25 mm

Blades

Art.-No. 526019 1506

T21 - 2.5 | 6.0 mm
radius milling tool (diamond)

T21	glass ceramics
-----	----------------

2,5 mm Ø 6 mm

up to 15 mm

Blades

Art.-No. 526005 2506

T4/T9 - 1.0 | 6.0 mm
radius milling tool short (l = 9 mm)

T4	Ti
T9	CoCr

1,0 mm Ø 6 mm

up to 15 mm

Blades

Art.-No. 526029 1006

T12/T14 - 1.0 | 6.0 mm
radius milling tool

T12	PMMA WAX
T14	Zr

1,0 mm Ø 6 mm

up to 25 mm

Blades

Art.-No. 526019 1006

T17 - 1.5 | 6.0 mm
shaft milling tool (l = 15 mm)

T17	PMMA WAX Zr
-----	-------------------

1,5 mm Ø 6 mm

up to 25 mm

Blades

Art.-No. 526001 1506

T22 - 1.0 | 6.0 mm
radius milling tool (diamond)

T22	glass ceramics
-----	----------------

1,0 mm Ø 6 mm

up to 15 mm

Blades

Art.-No. 526005 1006

T5/T10 - 1.5 | 6.0 mm
shaft milling tool short (l = 12 mm, four blades)

T5	Ti
T10	CoCr

1,5 mm Ø 6 mm

up to 15 mm

Blades

Art.-No. 526002 1506

T13/T40/T50 - 2.5 | 6.0 mm
radius milling tool (diamond coated)

T13	Zr
T40	SINT
T50	COMP

2,5 mm Ø 6 mm

up to 25 mm

Blades

Art.-No. 526013 2506

T18 - 0.5 | 6.0 mm
radius milling tool (l = 4 mm)

T18	UNIVERSAL
-----	-----------

0,5 mm Ø 6 mm

up to 15 mm

Blades

Art.-No. 526026 0506

T23 - 0.6 | 6.0 mm
radius milling tool (conical, diamond)

T23	glass ceramics
-----	----------------

0,6 mm Ø 6 mm

up to 15 mm

Blades

Art.-No. 526005 0606

T26 - 3.0 | 6.0 mm
radius milling tool long (l = 20 mm)

T26

Ti
CoCr

3,0 mm Ø 6 mm

16 - 20 mm

Blades

Art.-No. 526030 3006

T32 - 0.6 | 6.0 mm
radius milling tool long (l = 12 mm)

T32

PMMA
WAX
Zr

0,6 mm Ø 6 mm

up to 25 mm

Blades

Art.-No. 526012 0606

T62 - 2.0 | 6.0 mm
torus milling tool (r = 0,2 mm, l = 16 mm, four blades)

T62

Ti
CoCr

2,0 mm Ø 6 mm

up to 15 mm

Blades

Art.-No. 526025 2006

T80 - 2.5 | 6.0 mm
drilling tool (l = 22 mm)

T80

Ti
CoCr

2,5 mm Ø 6 mm

up to 20 mm

Drill

Art.-No. 526023 2506

T27 - 2.0 | 6.0 mm
radius milling tool long (l = 16 mm)

T27

Ti
CoCr

2,0 mm Ø 6 mm

16 - 20 mm

Blades

Art.-No. 526030 2006

T33/ T43/ T53 - 0.3 | 6.0 mm
radius milling tool (conical)

T33

PMMA
WAX
Zr
SINT
COMP

0,3 mm Ø 6 mm

up to 25 mm

Blades

Art.-No. 526019 0306

T63 - 1.5 | 6.0 mm
torus milling tool (r = 0,08 mm, l = 7 mm, two blades)

T63

Ti
CoCr

1,5 mm Ø 6 mm

up to 15 mm

Blades

Art.-No. 526025 1506

T81 - 1.5 | 6.0 mm
drilling tool (l = 18 mm)

T81

Ti
CoCr

1,5 mm Ø 6 mm

up to 20 mm

Drill

Art.-No. 526023 1506

T28 - 1.5 | 6.0 mm
radius milling tool long (l = 15 mm)

T28

Ti
CoCr

1,5 mm Ø 6 mm

up to 25 mm

Blades

Art.-No. 526030 1506

T34 - 3.0 | 6.0 mm
radius milling tool long (l = 27 mm)

T34

PMMA
WAX

3,0 mm Ø 6 mm

up to 30 mm

Blades

Art.-No. 526012 3006

T64 - 1.5 | 6.0 mm
torus milling tool (r = 0,08 mm, l = 15 mm, two blades)

T64

Ti
CoCr

1,5 mm Ø 6 mm

up to 15 mm

Blades

Art.-No. 526028 1506

T98 - 2.5 | 6.0 mm
shaft milling tool (l = 20 mm, three blades)

T98

CALIBR.

2,5 mm Ø 6 mm

Blades

Art.-No. 526024 2506

T29 - 1.0 | 6.0 mm
radius milling tool long (l = 11 mm)

T29

Ti
CoCr

1,0 mm Ø 6 mm

16 - 20 mm

Blades

Art.-No. 526030 1006

T35 - 2.0 | 6.0 mm
radius milling tool long (l = 20 mm)

T35

PMMA
WAX

2,0 mm Ø 6 mm

up to 30 mm

Blades

Art.-No. 526012 2006

T67 - 2.0 | 6.0 mm
shaft milling tool short (l = 7 mm, four blades)

T67

Ti
CoCr

2,0 mm Ø 6 mm

up to 15 mm

Blades

Art.-No. 526002 2006

T30 - 4.0 | 6.0 mm
shaft milling tool long (l = 32 mm, single blade, slide coated)

T30

PMMA
WAX
PEEK

4,0 mm Ø 6 mm

up to 30 mm

Blade

Art.-No. 526012 4006

T61 - 3.0 | 6.0 mm
Quattro speed milling tool (l = 15 mm)

T61

CoCr

3,0 mm Ø 6 mm

up to 15 mm

Blades

Art.-No. 526025 3006

T68 - 1.5 | 6.0 mm
shaft milling tool long (l = 15 mm, four blades)

T68

UNIVERSAL

1,5 mm Ø 6 mm

16 - 20 mm

Blades

Art.-No. 526021 1506

CORiTEC Materials

CORTEC ZR (ZIRCONIUM DIOXIDE)

Covers all indications for dental restorations of up to 16 units.
Ideally suited for monolithic restorations.

- Highly translucent zirconium dioxide for natural esthetics
- Increased strength compared to lithium dioxide

Zr ht+ Disc
(highly translucent)



Zr Disc



Zr transpa Disc



Zr transpa Disc
(pre-colored translucent)



CORTEC ZR (ZIRCONIUM DIOXIDE)

- Single crowns
- Single cap
- Bridges up to 16 units, full bridges, and PFM technology
- Good mechanical properties
- Good milling properties
- Corrosion resistant

CoCr Disc
(non-precious alloy)



CoCr Mo Disc
(non-precious alloy)



Ti Disc
(Grad 2, Grad 4, Grad 5)



CORTEC MODEL DISC IVORY

- Blank for the production of dental models
- Low-cost material
- Also suitable for test purposes or for milling calibration bodies



JUVORA PEEK (POLYETHERETHERKETONE)

- Clamp-retained constructions
- Juvora PEEK in its basic colour (brown-beige)
- Highest biological compatibility



CORTEC WAX DISC (WAX, GRAY)

CORTEC Wax Disc is not suitable for intraoral application.
After milling, the material can be used as lost wax.
Moulds can be used in casting technology.
It can be milled easily and combusted residue-free.



CORTEC PMMA (POLYMETHYL METHACRYLATE)

- Bite guards, therapeutic splints, drilling templates, bite regulators
- Very good mechanical properties
- Aesthetic shade effect due to high translucency
- Good milling behaviour

PMMA Splint Disc



PMMA Disc



MAX PERFORMANCE
for your milling centre

Scanner COMPATIBLE WITH **exocad**

CORiTEC i3Dscan eco

- All-round carefree package for newcomers or small laboratories
- Simple, fast, low-priced
- Very compact design



CORiTEC i3Dscan color

- The object to be scanned is automatically guided into the measuring field
- Modern touch control design
- The 180-degree opening offers a large working area



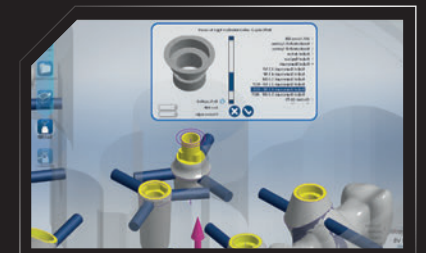
CORiTEC i3Dscan color HR

- Enormously high scanning efficiency and precision (4 µm)
- Color Texture scan
- Blue-Light LED & High resolution camera (2.8 MP)
- All modules included in the scope of delivery

CAM Software

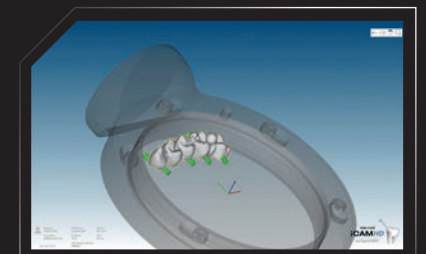
CORiTEC iCAM V5 smart

- All strategies optimized for 5-axis simultaneous machining
- Automatic exchange of implant connections (ReFit option)
- No annual license fees
- Fully automatic and easy operation with “Wizard Workflow”



CORiTEC iCAM HD

- hyperDENT based CAM software
- Flexible payment model (purchase or subscription model)
- Three months free use with CORiTEC 150i machine purchase



Suction systems

iVAC PRO+

The industrial extraction system with brushless motor, volume flow of 280 m³/hr, adjustable capacity, filter system with Teflon filter cartridge and large dust drawer, automatic compressed air self-cleaning is suitable for all dental milling machines from imes-icore®.

iVAC PRO+	
Volume flow	280 m³/hr
Output	1200 W
Filter system	Teflon filter cartridge,automatic cleaning feature
Filter volume	15 liters/56.78 gpm (dust drawer)
Width x depth x height	13.8 x 13.8 x 39.4 inch / 350 x 350 x 1000 mm
Supply voltage	115 V/230 V
Special features	compressed air self-cleaning system



iVAC eco+

The iVAC eco+ is the universal solution for all table machines made by imes-icore. Technical Highlights: Very powerful, with a flow rate of up to 260m³/hr, adjustable power, brushless motor for a long service life; large-volume filter with 25 liter filter bags and a downline HEPA filter, runs quietly, suitable for imes-icore machine tables T1 and T2

iVAC expert	
Volume flow	260 m³/Std
Output	1200 W
Filter system	dust drawer, HEPA filter
Filter volume	25 liters
Width x depth x height	17.3 x 18.1 x 29.5 inch / 440 x 460 x 750 mm
Supply voltage	115 V - 230 V



Sintering Furnaces

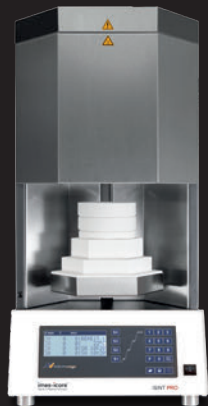
iSINT eco

The iSINT eco stands for economy and offers high-quality technology, matching accessories for high standards at a fair price. Compact and with a small footprint, the iSINT eco sintering oven still has sufficient capacity for a sintering bowl Ø 100 mm for approx. 25 units. The door stop can be mounted right and left.



iSINT PRO

A larger sintering capacity of up to 80 single crowns is offered by the new iSINT PRO. With a heating system of four high-quality molybdenum disilicide (MoSi2) heating elements, you can choose between conventional long-term sintering or SPEED sintering at a rate of up to 99 °C/min/ 210.20°F/min. The iSINT PRO is operated with a simple and convenient program control. The programs are indicated on a 4-line LCD display. A timer function for overnight sintering or the use of pre-drying programs for shaded zirconium restorations offer further options. In addition, three service programs are available for easy maintenance of the sinter furnace.



	iSINT eco	iSINT PRO
Number of heating elements	4	4
Display	7-Segment	4-line LCD
Number of program memories	9	30
Combustion chamber capacity	1 x 100	2 x 120
Max. heating rate	30 °C/min / 86 °F/min	99 °C/min / 210.20 °F/min
Power in W	1300	3200
Lift function	No	Yes
Speedsintering	No	Yes

Special solutions

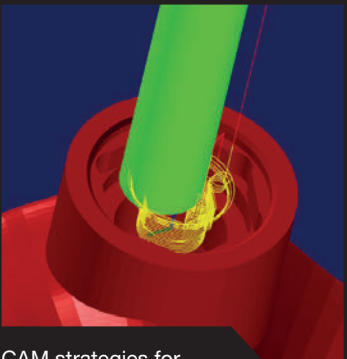
Hybrid machining

CORTEC 650i FOR SLM FINISH MACHINING

With the high-precision CORTEC 650i machine, technology partners have developed a special process to re-mill work that was previously produced in the SLM process with high precision. This allows e.g. build highly complex web constructions made of various materials such as titanium or CoCr in advance in the SLM process, and subsequently rework interfaces with the CORTEC 650i for the perfect fit and surface finish. This procedure is implemented in a special WorkFlow, in which a 3D probe is integrated in the CORTEC 650i. The touch probe determines the exact position and position of the SLM building board. Using 3D measurement functions of the CAM software, the fit and interface areas of the restorations on the SLM plate can then be precisely milled with the CORTEC 650i. This method can be used in principle with any SLM systems and with different CAM systems in combination with the CORTEC 650i.



Precise 3D measurement
in the CORTEC 650i



CAM strategies for
precision areas








Milling results with high
surface quality

With the 3D probe, a controlled measurement is made via reference points in order to determine deviations, displacements and rotations. In the background, the imes-icore® 3D-measurement software calculates the values and writes them back to the CAM software to implement the corrections.

1

Compatible with among others the following SLM installations:





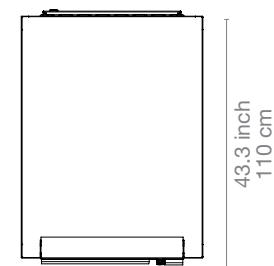
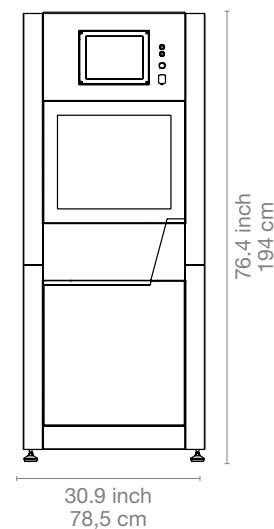
2

Compatible with among others the following CAM systems:

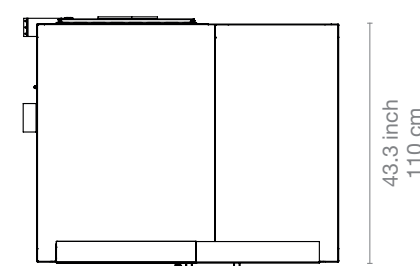
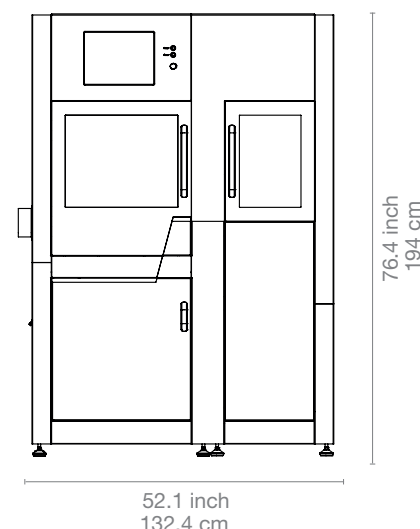


Dimensions

CORiTEC 650i



CORiTEC 650i Loader



In numbers

COR TEC 650i

COR TEC 650i Loader

Mechanics / electronics		
Number of axes and operation type	5 axes, simultaneous machining	5 axes, simultaneous machining
Rotation angle	A-axis 360°, B-axis 130°	A-axis 360°, B-axis 130°
Spindle / power	High-frequency spindle / 3.2 kW	High-frequency spindle / 3.2 kW
Spindle cooling	Water cooled	Water cooled
Maximum spindle speed	50.000 rpm	50.000 rpm
Tools	HSK 25	HSK 25
Tool changer	32-fold	32-fold
Tool length control	≤ 0.002 mm precision	≤ 0.002 mm precision
Blank changer	-	Up to 16 blanks
Integrated computer hardware	Windows based	Windows based
Monitor	Integrated 15" touch screen	Integrated 15" touch screen
Illumination	3 LED status colors	3 LED status colors
Software	Remote DENTAL 3.0	Remote DENTAL 3.0
Air pressure	6-9 bar / 87-130 PSI constantly supply, 150 liters/min / 567.75 gpm/min	6-9 bar / 87-130 PSI constantly supply, 160 liters/min / 605.60 gpm/min
Cooling liquid	19 liter / 71.92 gpm integrated	19 liter / 71.92 gpm integrated
Connecting requirements		
Weight	625 kg / 1378.13 lbs	930 kg / 2050.65 lbs
Width x depth x height	30.9 x 43.3 x 76.4 inch 785 x 1100 x 1940 mm	52.1 x 43.3 x 76.4 inch 1324 x 1100 x 1940 mm
Line voltage / frequency	400 V - 3 stages / 50/60 Hz	400 V - 3 stages / 50/60 Hz

Sales and support partner worldwide



Represented for you in over 100 countries.

imes-icore® GmbH has been a leading manufacturer and technology partner since 2003 in the field of dental CAD/CAM systems and solutions.

With its unique range of dental milling and grinding systems imes-icore® offers a perfect selection for all individual requirements of dental laboratories, milling centres and dental practices of all sizes.

Our “Open-System” product philosophy makes it possible to easily integrate our milling machines into your existing workflow and to integrate them with your open scanners and your CAD/CAM software. We are open for your material selection.

Dealer for the Netherlands:

www.ubervo.nl

ubervo
DENTAL B.V.