



imes-icore<sup>®</sup>  
Dental & Medical Solutions




CORiTEC<sup>®</sup> 350i series

uberVo  
DENTAL B.V.

# The CORiTEC® 350i series

WHAT ARE THE DIFFERENCES?

	CORiTEC 350i PRO		CORiTEC 350i Loader PRO		CORiTEC 350i PRO+		CORiTEC 350i Loader PRO+	
Motor technology	Servo with absolute encoder							
Resolution	32.000 Inc (0.15 µm)							
Base structure	Polymer concrete, steel rails							
Screen	15“ HD touchscreen							
Housing	Shiny design, LED illumination							
Fully automatic workpiece blankchanger	Manual		 12-fold		Manual		 12-fold	
Blankholder inclusive	2		8		2		8	
Absolute measurement system in all axes	✓		✓		✓		✓	
Spindle power	1.0 kW		1.0 kW		2.6 kW		2.6 kW	
Spindle bearing	Two hybrid bearings				Three hybrid bearings			
Collet	6 mm				6 mm (self cleaning)			
Zero point clamping system	✓		✓		✓		✓	
Cooling system spindle	Air cooled				Water cooling system			



THE BUSINESS CLASS  
of dental  
CAD/CAM machines!





# CORiTEC® 350i PRO/350i Loader PRO

## THE PROFESSIONAL SOLUTION FOR HIGHEST DEMANDS

The high-resolution dynamic servo motors with absolute measuring systems used in the CORiTEC 350i PRO series guarantee up to 20 % faster machining with optimum precision.

A further advantage of the PRO series is that this machine system is constructed from a one-piece machine frame made of polymer concrete and thus guarantees the highest possible stability for vibration-free machining.

The CORiTEC 350i Loader PRO with fully automated blank magazine also enables versatile machining of up to 12 blanks in unmanned operation. Due to the precise repositioning of the zero point clamping system, different PreFab abutment holders can be used.



- WET
- DRY
- 5 AX
- 6 mm  
20x
- 
- 
- 
- 
- 12x
- ION  
optional



# CORiTEC® 350i PRO

ALL CAD/CAM MATERIALS  
CAN BE PROCESSED

15 INCH  
TOUCHSCREEN

INTEGRATED  
WET AND DRY  
PROCESSING

ABSOLUTE MEASURING  
SYSTEM IN ALL AXES

ZERO-POINT  
CLAMPING  
SYSTEM  
STANDARD

REVOLUTIONARY  
BASE STRUCTURE OF  
POLYMER CONCRETE

20-FOLD  
TOOL CHANGER

INTEGRATED TEMPERATURE  
COMPENSATION



PMMA	WAX
Zr	COMPOSITE
PEEK	SINT
Glass ceramics	PreFab Abutments
CoCr	Ti
Standard	C-Clamp
PreMilled Abutment	Block
Dentures	zero-point clamping system
Crowns, Bridges	Hybrid Abutment
Inlay, Onlay, Veneer	Splint
Full Denture	Drilling template
Model	Model casting
Bridge	Abutments
Telescopic technology	Hybrid machining

# CORiTEC® 350i Loader PRO

FULLY AUTOMATIC  
12-FOLD BLANK CHANGER

USE OF DIFFERENT ADAPTER SYSTEMS  
e.g. prefabricated abutments or block materials

INTEGRATED  
WET AND DRY  
PROCESSING

AROUND THE CLOCK  
24 hours of production

ZERO POINT  
CLAMPING  
SYSTEM

OPTIONAL  
IONIZER  
POSSIBLE



NEW, HIGH-DYNAMIC SERVO DRIVES  
for up to 20 % quicker processing

INTEGRATED  
TEMPERATURE  
COMPENSATION



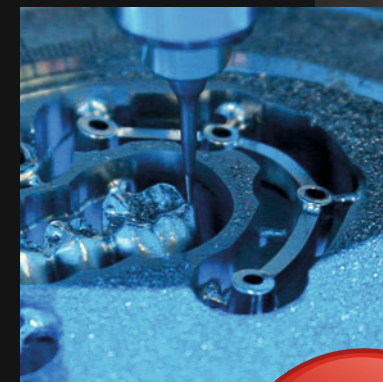
# CORiTEC® 350i PRO<sup>+</sup>/350i Loader PRO<sup>+</sup>

## THE PLUS OF PERFORMANCE AND PRECISION

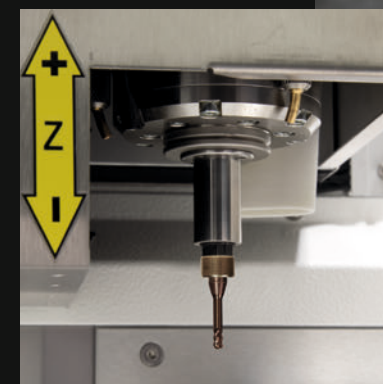
As already implemented in the CORiTEC 350i PRO, the CORiTEC 350i PRO<sup>+</sup> series also comes with high-resolution dynamic servo motors and absolute measuring systems. To use this advanced technology and to be able to fully exploit its full potential, the CORiTEC 350i PRO<sup>+</sup> is equipped with a watercooled, powerful 2.6 kW spindle with 3-fold hybrid ball bearing (water-cooled). Reaching the stability and reducing vibrations is given by the massive stainless steel blank holders.

The water cooling ensures a constant temperature of the milling spindle, so thermal expansion of the milling spindle is significantly minimized and enables even more precise milling results.

The CORiTEC 350i Loader PRO<sup>+</sup> with fully automated blank magazine also enables the versatile machining of up to 12 blanks in unmanned operation.



Zero-point  
clamping system  
for stainless  
steel blank holder



- WET
- DRY
- 5 AX
- 6 mm  
20x
- 
- 
- 
- 
- 
- ION  
optional



# CORiTEC® 350i PRO<sup>+</sup>



HIGH-RESOLUTION DYNAMIC  
SERVO MOTORS  
with absolute measuring system

INTEGRATED  
WET AND DRY  
PROCESSING

20-FOLD  
TOOL CHANGER

OPTIONAL  
IONIZER  
POSSIBLE



STAINLESS STEEL BLANK HOLDER

INTEGRATED  
TEMPERATURE  
COMPENSATION

PMMA	WAX
Zr	COMPOSITE
PEEK	SINT
Glass ceramics	PreFab Abutments
CoCr	Ti
Standard	C-Clamp
PreMilled Abutment	Block
Dentures	zero-point clamping system
Crowns, Bridges	Hybrid Abutment
Inlay, Onlay, Veneer	Splint
Full Denture	Drilling template
Model	Model casting
Bridge	Abutments
Telescopic technology	Hybrid machining

# CORiTEC® 350i Loader PRO<sup>+</sup>

STAINLESS STEEL  
BLANK HOLDER

INTEGRATED  
WET AND DRY  
PROCESSING

AROUND THE CLOCK  
24 hours of production

OPTIONAL IONIZER  
POSSIBLE



NEW, HIGH-DYNAMIC SERVO DRIVES  
for up to 20 % quicker processing

INTEGRATED  
TEMPERATURE  
COMPENSATION



# Applications & holder

## HALF-OPEN BLANK HOLDER (C-CLAMP)

- Enables 5-axis machining up to 90 degrees axis adjustment
- Extension of the technical possibilities of your milling machine
- End face machining



## MANUFACTURE OF DENTAL PROSTHESES

- Baltic Denture from Merz Dental
- Dentsply Sirona Dentures



## PREFABRICATED ABUTMENTS

- Short production times
- Production of abutments in very simple processes
- High accuracy of fit due to prefabricated implant interface

DESS  
Abutmentholder



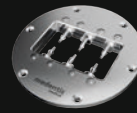
NT-Preform® Abutment  
(nt-trading)



PreFace® Abutment  
(Medentika)



MED-Preform® Abutment  
(medentis)



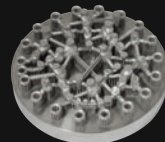
## THERAPEUTIC SPLINTS

- Bite splints, bleaching splints
- Snoring splints, aligners
- Simple and high-quality implementation in CAD/CAM processes



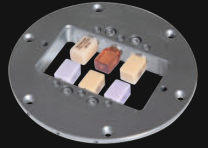
## HYBRID MACHINING - SINTERING AND MILLING\*

- Milling post-processing of finished restorations using the SLM method
- High precision milling combined with low-cost SLM process
- Compatible with most SLM systems



## GRINDING OF CAD/CAM BLOCKS

- New 6-fold adapter enables effective production
- Exchangeable strips for different adapter systems
- Crowns, onlays, inlays, veneers, bridge frameworks, etc.



## IMPLANT-SUPPORTED BRIDGES AND BARS / ONE-PIECE ABUTMENTS\*

- Highest fitting accuracy due to new CAM technologies (ReFit)
- Stress-free fit even with larger spans
- Easy production due to high degree of automation with coordinated CAM software



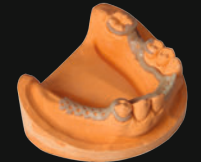
## BIOHPP ELEGANCE PREFABS

- Individual hybrid abutment on PEEK basis
- BioHPP for permanent dentures, free of metal, oxide and monomer
- Homogeneous combination of titanium and BioHPP



## MILLING OF MODEL CASTS

- Production in combustible materials, PEEK or directly in CoCr
- Allergy-free and lightweight model casting when using PEEK
- Cost-efficient



## MILLED IMPLANT MODELS

- DIM (Digital Implant Model) from nt-trading
- Precisely positionable
- 2-part implant analog



## MODEL MILLING BAUMANN SYSTEM

- Model fabrication in CAD/CAM process
- High reproducibility and precision
- Model fabrication with digital impression by intraoral scanner



\*only for COR.TEC 350i PRO<sup>+</sup> in preparation

**T1/T6 - 3.0 | 6.0 mm**  
radius milling tool short (l = 15 mm)

T1	Ti
T6	CoCr

3,0 mm Ø 6 mm

up to 15 mm

Blades

Art.-No. 526029 3006

**T11 - 2.5 | 6.0 mm**  
radius milling tool (single blade, slide coated)

T11	PMMA WAX PEEK
-----	---------------------

2,5 mm Ø 6 mm

up to 25 mm

Blade

Art.-No. 526004 2506

**T14/T41/T51 - 1.0 | 6.0 mm**  
radius milling tool (diamond coated)

T14	Zr
T41	SINT
T51	COMP

1,0 mm Ø 6 mm

up to 25 mm

Blades

Art.-No. 526013 1006

**T19 - 0.5 | 6.0 mm**  
shaft milling tool (l = 4 mm)

T19	UNIVERSAL
-----	-----------

0,5 mm Ø 6 mm

up to 15 mm

Blades

Art.-No. 526001 0506

**T2/T7 - 2.0 | 6.0 mm**  
radius milling tool short (l = 12 mm)

T2	Ti
T7	CoCr

2,0 mm Ø 6 mm

up to 15 mm

Blades

Art.-No. 526029 2006

**T11/T13 - 2.5 | 6.0 mm**  
radius milling tool

T11	PMMA WAX
T13	Zr

2,5 mm Ø 6 mm

up to 25 mm

Blades

Art.-No. 526019 2506

**T15/T42/T52 - 0.6 | 6.0 mm**  
radius milling tool (conical)

T15	PMMA WAX Zr
T42	SINT
T52	COMP

0,6 mm Ø 6 mm

up to 25 mm

Blades

Art.-No. 526019 0606

**T20 - 0.6 | 6.0 mm**  
radius milling tool (conical)

T20	Ti CoCr
-----	------------

0,6 mm Ø 6 mm

up to 15 mm

Blades

Art.-No. 526003 0606

**T3/T8 - 1.5 | 6.0 mm**  
radius milling tool short (l = 12 mm)

T3	Ti
T8	CoCr

1,5 mm Ø 6 mm

up to 15 mm

Blades

Art.-No. 526029 1506

**T12 - 1.0 | 6.0 mm**  
radius milling tool (single blade, slide coated)

T12	PMMA WAX PEEK
-----	---------------------

1,0 mm Ø 6 mm

up to 25 mm

Blade

Art.-No. 526004 1006

**T16 - 1.5 | 6.0 mm**  
radius milling tool long (l = 15 mm)

T16	PMMA WAX PEEK
-----	---------------------

1,5 mm Ø 6 mm

up to 25 mm

Blades

Art.-No. 526019 1506

**T21 - 2.5 | 6.0 mm**  
radius milling tool (diamond)

T21	glass ceramics
-----	----------------

2,5 mm Ø 6 mm

up to 15 mm

Blades

Art.-No. 526005 2506

**T4/T9 - 1.0 | 6.0 mm**  
radius milling tool short (l = 9 mm)

T4	Ti
T9	CoCr

1,0 mm Ø 6 mm

up to 15 mm

Blades

Art.-No. 526029 1006

**T12/T14 - 1.0 | 6.0 mm**  
radius milling tool

T12	PMMA WAX
T14	Zr

1,0 mm Ø 6 mm

up to 25 mm

Blades

Art.-No. 526019 1006

**T17 - 1.5 | 6.0 mm**  
shaft milling tool (l = 15 mm)

T17	PMMA WAX Zr
-----	-------------------

1,5 mm Ø 6 mm

up to 25 mm

Blades

Art.-No. 526001 1506

**T22 - 1.0 | 6.0 mm**  
radius milling tool (diamond)

T22	glass ceramics
-----	----------------

1,0 mm Ø 6 mm

up to 15 mm

Blades

Art.-No. 526005 1006

**T5/T10 - 1.5 | 6.0 mm**  
shaft milling tool short (l = 12 mm, four blades)

T5	Ti
T10	CoCr

1,5 mm Ø 6 mm

up to 15 mm

Blades

Art.-No. 526002 1506

**T13/T40/T50 - 2.5 | 6.0 mm**  
radius milling tool (diamond coated)

T13	Zr
T40	SINT
T50	COMP

2,5 mm Ø 6 mm

up to 25 mm

Blades

Art.-No. 526013 2506

**T18 - 0.5 | 6.0 mm**  
radius milling tool (l = 4 mm)

T18	UNIVERSAL
-----	-----------

0,5 mm Ø 6 mm

up to 15 mm

Blades

Art.-No. 526026 0506

**T23 - 0.6 | 6.0 mm**  
radius milling tool (conical, diamond)

T23	glass ceramics
-----	----------------

0,6 mm Ø 6 mm

up to 15 mm

Blades

Art.-No. 526005 0606



**T26 - 3.0 | 6.0 mm**  
radius milling tool long (l = 20 mm)

T26

Ti
CoCr

3,0 mm Ø 6 mm

16 - 20 mm

Blades

Art.-No. 526030 3006

**T32 - 0.6 | 6.0 mm**  
radius milling tool long (l = 12 mm)

T32

PMMA
WAX
Zr

0,6 mm Ø 6 mm

up to 25 mm

Blades

Art.-No. 526012 0606

**T62 - 2.0 | 6.0 mm**  
torus milling tool (r = 0,2 mm, l = 16 mm, four blades)

T62

Ti
CoCr

2,0 mm Ø 6 mm

up to 15 mm

Blades

Art.-No. 526025 2006

**T80 - 2.5 | 6.0 mm**  
drilling tool (l = 22 mm)

T80

Ti
CoCr

2,5 mm Ø 6 mm

up to 20 mm

Drill

Art.-No. 526023 2506

**T27 - 2.0 | 6.0 mm**  
radius milling tool long (l = 16 mm)

T27

Ti
CoCr

2,0 mm Ø 6 mm

16 - 20 mm

Blades

Art.-No. 526030 2006

**T33/ T43/ T53 - 0.3 | 6.0 mm**  
radius milling tool (conical)

T33

PMMA
WAX
Zr
SINT
COMP

0,3 mm Ø 6 mm

up to 25 mm

Blades

Art.-No. 526019 0306

**T63 - 1.5 | 6.0 mm**  
torus milling tool (r = 0,08 mm, l = 7 mm, two blades)

T63

Ti
CoCr

1,5 mm Ø 6 mm

up to 15 mm

Blades

Art.-No. 526025 1506

**T81 - 1.5 | 6.0 mm**  
drilling tool (l = 18 mm)

T81

Ti
CoCr

1,5 mm Ø 6 mm

up to 20 mm

Drill

Art.-No. 526023 1506

**T28 - 1.5 | 6.0 mm**  
radius milling tool long (l = 15 mm)

T28

Ti
CoCr

1,5 mm Ø 6 mm

up to 25 mm

Blades

Art.-No. 526030 1506

**T34 - 3.0 | 6.0 mm**  
radius milling tool long (l = 27 mm)

T34

PMMA
WAX

3,0 mm Ø 6 mm

up to 30 mm

Blades

Art.-No. 526012 3006

**T64 - 1.5 | 6.0 mm**  
torus milling tool (r = 0,08 mm, l = 15 mm, two blades)

T64

Ti
CoCr

1,5 mm Ø 6 mm

up to 15 mm

Blades

Art.-No. 526028 1506

**T98 - 2.5 | 6.0 mm**  
shaft milling tool (l = 20 mm, three blades)

T98

CALIBR.
---------

2,5 mm Ø 6 mm

Blades

Art.-No. 526024 2506

**T29 - 1.0 | 6.0 mm**  
radius milling tool long (l = 11 mm)

T29

Ti
CoCr

1,0 mm Ø 6 mm

16 - 20 mm

Blades

Art.-No. 526030 1006

**T35 - 2.0 | 6.0 mm**  
radius milling tool long (l = 20 mm)

T35

PMMA
WAX

2,0 mm Ø 6 mm

up to 30 mm

Blades

Art.-No. 526012 2006

**T67 - 2.0 | 6.0 mm**  
shaft milling tool short (l = 7 mm, four blades)

T67

Ti
CoCr

2,0 mm Ø 6 mm

up to 15 mm

Blades

Art.-No. 526002 2006

**T30 - 4.0 | 6.0 mm**  
shaft milling tool long (l = 32 mm, single blade, slide coated)

T30

PMMA
WAX
PEEK

4,0 mm Ø 6 mm

up to 30 mm

Blade

Art.-No. 526012 4006

**T61 - 3.0 | 6.0 mm**  
Quattro speed milling tool (l = 15 mm)

T61

CoCr
------

3,0 mm Ø 6 mm

up to 15 mm

Blades

Art.-No. 526025 3006

**T68 - 1.5 | 6.0 mm**  
shaft milling tool long (l = 15 mm, four blades)

T68

UNIVERSAL
-----------

1,5 mm Ø 6 mm

16 - 20 mm

Blades

Art.-No. 526021 1506

# CORiTEC® Materials

## CORTEC ZR (ZIRCONIUM DIOXIDE)

Covers all indications for dental restorations of up to 16 units.  
Ideally suited for monolithic restorations.

- Highly translucent zirconium dioxide for natural esthetics
- Increased strength compared to lithium dioxide

Zr ht+ Disc  
(highly translucent)



Zr Disc



Zr transpa Disc



Zr transpa Disc  
(pre-colored translucent)



## CORTEC CoCr AND Ti

- Single crowns
- Single cap
- Bridges up to 16 units,  
full bridges, and PFM technology

- Good mechanical properties
- Good milling properties
- Corrosion resistant

CoCr Disc  
(non-precious alloy)



CoCr Mo Disc  
(non-precious alloy)



Ti Disc  
(Grad 2, Grad 4, Grad 5)



## CORTEC MODEL DISC IVORY

- Blank for the production of dental models
- Low-cost material
- Also suitable for test purposes or for milling calibration bodies



## JUVORA PEEK (POLYETHERETHERKETONE)

- Clamp-retained constructions
- Juvora PEEK in its basic colour (brown-beige)
- Highest biological compatibility



## CORTEC WAX DISC (WAX, GRAY)

CORTEC Wax Disc is not suitable for intraoral application.  
After milling, the material can be used as lost wax.  
Moulds can be used in casting technology.  
It can be milled easily and combusted residue-free.



## CORTEC PMMA (POLYMETHYL METHACRYLATE)

- Bite guards, therapeutic splints,  
drilling templates, bite regulators
- Very good mechanical properties
- Aesthetic shade effect due to high translucency
- Good milling behaviour

PMMA Splint Disc



PMMA Disc





# Scanner

COMPATIBLE WITH **exocad**

## CORiTEC i3Dscan eco

- All-round carefree package for newcomers or small laboratories
- Simple, fast, low-priced
- Very compact design



## CORiTEC i3Dscan color

- The object to be scanned is automatically guided into the measuring field
- Modern touch control design
- The 180-degree opening offers a large working area



## CORiTEC i3Dscan color HR

- Enormously high scanning efficiency and precision (4 µm)
- Color Texture scan
- Blue-Light LED & High resolution camera (2.8 MP)
- All modules included in the scope of delivery

# CAM Software

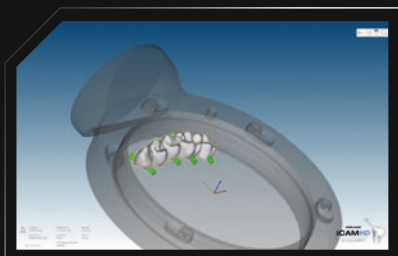
## CORiTEC iCAM V5 smart

- All strategies optimized for 5-axis simultaneous machining
- Automatic exchange of implant connections (ReFit option)
- No annual license fees
- Fully automatic and easy operation with “Wizard Workflow”



## CORiTEC iCAMHD

- hyperDENT based CAM software
- Flexible payment model (purchase or subscription model)
- Three months free use with CORiTEC 150i machine purchase



# Machine tables

The undercounters, specially developed for the needs of the various machine types, impress with their sturdy design as well as their attractive appearance. The machine tables have sufficient floor space. Stable rollers ensure optimum stability and easy movement of the devices. Drawers, cable ducts and a cabinet for the integration of appropriate extraction systems are already provided.

Machine Table T1	Machine Table T2
30.3 x 36.6 x 31.1 inch 770 x 930 x 790 mm W x H x D	41.7 x 36.6 x 31.1 inch 1060 x 930 x 790 mm W x H x D
COR TEC 350i COR TEC 350i PRO COR TEC 350i PRO+	COR TEC 350i Loader COR TEC 350i Loader PRO COR TEC 350i Loader PRO+

MACHINE TABLE T1

MACHINE TABLE T2



# Dust extraction systems

	iVAC eco+	iVAC silent PRO	iVAC PRO+
Volume flow	260m³/h	240 m³/h	280m³/h
Output	1200 W	1610 W	1200 W
Filter system	Dust drawer, HEPA filter	Teflon filter cartridge, automatic cleaning feature	Teflon filter cartridge, automatic cleaning feature
Filter volume	25 l	8 l	15 l
W x D x H	7.3 x 18.1 x 29.5 inch 440 x 460 x 750 mm	10.6 x 21.2 x 21.1 inch 270 x 540 x 535 mm	13.7 x 13.7 x 39.3 inch 350 x 350 x 1000 mm
Supply voltage	100-240V/ 50/60Hz	110V - 50/60Hz 230V - 50/60Hz	100-240V/ 50/60Hz



# Sintering furnances

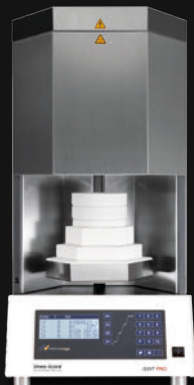
## iSINT eco

The **iSINT eco** stands for economy and offers high-quality technology, matching accessories for high standards at a fair price. Compact and with a small footprint, the **iSINT eco** sintering oven still has sufficient capacity for a sintering bowl Ø 100 mm for approx. 25 units. The door stop can be mounted right and left.



## iSINT PRO

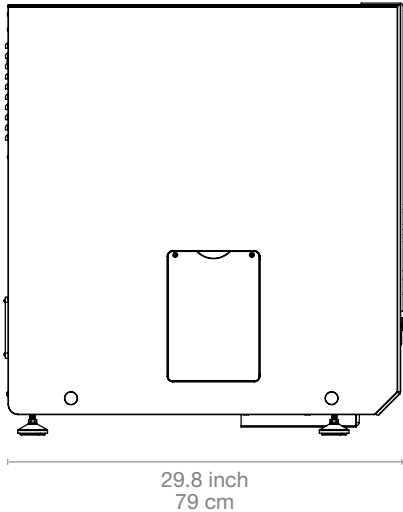
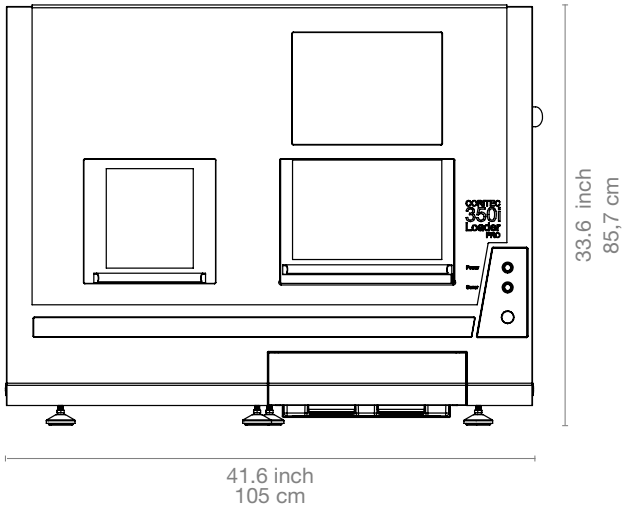
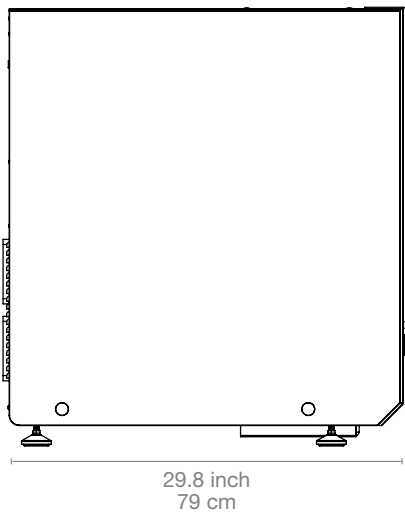
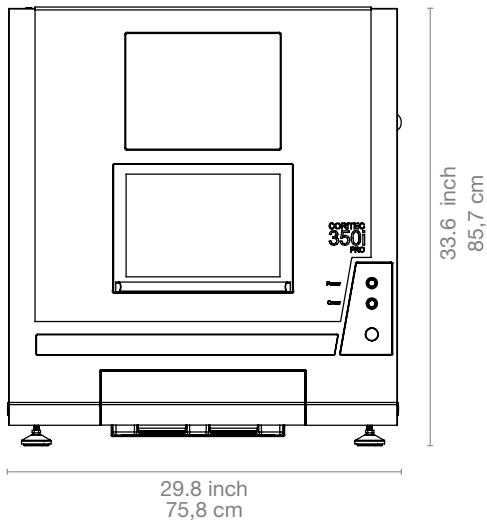
A larger sintering capacity of up to 80 single crowns is offered by the new **iSINT PRO**. With a heating system with four high-quality molybdenum disilicide (MoSi2) heating elements, you can choose between conventional long-term sintering or SPEED sintering at a rate of up to 99 °C/min/ 210.20 °F/min. The **iSINT PRO** is controlled by a simple and convenient program control. The programs are displayed on a 4-line LCD display. A timer function for overnight sintering or the use of pre-drying programs for shaded zirconium restorations offer further options. In addition, three service programs are available for easy maintenance of the sinter furnace.



	iSINT eco	iSINT PRO
Number of heating elements	4	4
Display	7-Segment	4-line LCD
Number of program memories	9	30
Heating chamber capacity	1x sintering tray / 100mm diameter	2x sintering tray / 120mm diameter
Max. heating rate	30°K/min	99°K/min
Power in W	1500 W	3200 W
Lift function	No	Yes
Speedsintering	No	Yes
Supply voltage / frequency	220-240V/ 50-60Hz	200-240V/ 50-60Hz

# Dimensions

## CORiTEC® 350i series





# CORiTEC® 350i series in numbers

CORiTEC 350i PRO

CORiTEC 350i Loader PRO

CORiTEC 350i PRO<sup>+</sup>

CORiTEC 350i Loader PRO<sup>+</sup>

Mechanics / electronics				
Base structure	Polymer concrete	Polymer concrete	Polymer concrete	Polymer concrete
Number of axes and operation type	5 axes, simultaneous machining	5 axes, simultaneous machining	5 axes, simultaneous machining	5 axes, simultaneous machining
Rotation angle	A-axis 360°, B-axis 115°	A-axis 360°, B-axis 115°	A-axis 360°, B-axis 115°	A-axis 360°, B-axis 115°
Spindle	High-frequency spindle	High-frequency spindle	High-frequency spindle	High-frequency spindle
Maximum spindle speed / spindle power	60.000 rpm 1.0 kW	60.000 rpm 1.0 kW	60.000 rpm 2.6 kW	60.000 rpm 2.6 kW
Spindle cooling	Air cooled	Air cooled	Water cooled	Water cooled
Zero point clamping system	Yes	Yes	Yes	Yes
Blankchanger	-	Up to 12 blanks	-	Up to 12 blanks with stainless steel holder
Tools	Milling and grinding tools with 6 mm shaft	Milling and grinding tools with 6 mm shaft	Milling and grinding tools with 6 mm shaft	Milling and grinding tools with 6 mm shaft
Tool changer	20-times	20-times	20-times	20-times
Tool length control	≤ 0.002 mm precision	≤ 0.002 mm precision	≤ 0.002 mm precision	≤ 0,002 mm precision
Integrated PC	Windows based	Windows based	Windows based	Windows based
Monitor	Integrated 15" touchscreen	Integrated 15" touchscreen	Integrated 15" touchscreen	Integrated 15" touchscreen
Illumination	3 LED status colors / LED illumination	3 LED status colors / LED illumination	3 LED status colors / LED illumination	3 LED status colors / LED illumination
Software	Remote DENTAL 3.0	Remote DENTAL 3.0	Remote DENTAL 3.0	Remote DENTAL 3.0
Compressed air supply*	6,5 - 9,0bar @ 80l/min 95 - 130PSI @ 2,9cf/min	6,5 - 9,0bar @ 80l/min 95 - 130PSI @ 2,9cf/min	6,5 - 9,0bar @ 80l/min 95 - 130PSI @ 2,9cf/min	6,5 - 9,0bar @ 80l/min 95 - 130PSI @ 2,9cf/min
Cooling liquid	4,8 l 1,27gal (US)	4,8 l 1,27gal (US)	4,8 l 1,27gal (US)	4,8 l 1,27gal (US)
Connecting requirements				
Weight	205 kg / 452.03 lbs	250 kg / 551.25 lbs	210 kg / 463.05 lbs	255 kg / 562.27 lbs
Width x depth x height	29.8 x 31.1 x 33.7 inch 758 x 790 x 857 mm	46.6 x 31.1 x 33.7 inch 1058 x 790 x 857 mm	29.8 x 31.1 x 33.7 inch 758 x 790 x 857 mm	46.6 x 31.1 x 33.7 inch 1058 x 790 x 857 mm
Supply voltage / frequency	100 V - 240 V / 50/60 Hz	100 V - 240 V / 50/60 Hz	100 V - 50/60 Hz 240 V - 50/60 Hz	100 V - 50/60 Hz 240 V - 50/60 Hz

\* acc. to. ISO 8573.1:2010 Class 3.4.3

Rev3.0



# Sales and support partner worldwide



Represented for you in over 100 countries.

imes-icore® GmbH has been a leading manufacturer and technology partner since 2003 in the field of dental CAD/CAM systems and solutions.

With its unique range of dental milling and grinding systems imes-icore® offers a perfect selection for all individual requirements of dental laboratories, milling centres and dental practices of all sizes.

Our “Open-System” product philosophy makes it possible to easily integrate our milling machines into your existing workflow and to integrate them with your open scanners and your CAD/CAM software. We are open for your material selection.



Official importeur | distributeur Nederland

**uberVo**

DENTAL B.V.

imes-icore® Nederland