

Tizian Scan Tizian CAD

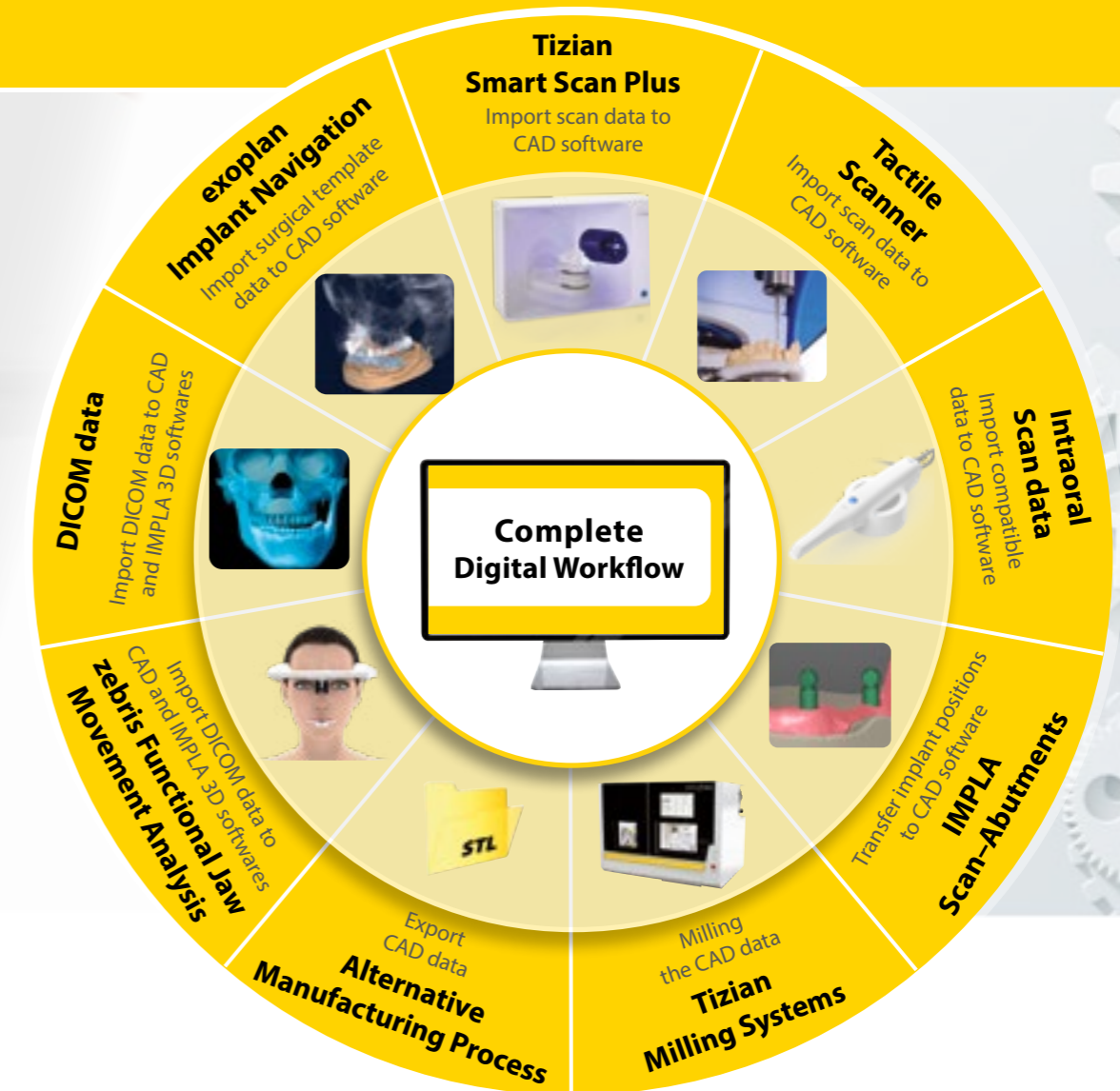
Complete Digital
Workflow



uberVo
DENTAL B.V.

Importeur | distributeur
Schütz Dental NL

SCHÜTZ  **DENTAL**
Micerium Group



 **Wide product range**
 **Partner for more than 50 years**
 **Excellent Support**

Content

„Complete Digital Workflow“	3	DICOM Viewer	12
More efficiency in digital processing by adaption of hardware and software to each other		Eggshell Temporaries	12
		Model Creator	13
		Framework Tool	13
		NEW: Smile Design	14
Tizian Smart Scan Plus 3.0	4-5	NEW: Additional modules for dentists	15
The fully automatic scanner		exoplan Implant Navigation	15
		Guide Creator	15
Renishaw DS 10	6	zebris Jaw Movement Analysis	16
Top-of-the-range tactile scanner		Our new zebris JMA Optic system is based upon a light optics procedure	
Tizian Creativ RT CAD-Software	7	Milling machines and Sintering Furnaces	17
High-End Software in “real time”		All system components are ideally adapted to each other.	
The basic software	8	Courses	18
Already includes great features. Further modules can be added as required.		Related brochures	19
		A one-stop shop - our broad product range	
Additional Software Modules	9-14	Connect with Schütz Dental	20
Abutments	9	Newsletter, Contact	
Bars with abutments	9		
Splint Tool	10		
TruSmile	10		
Virtual Articulator	11		
Extended tooth data base	11		

The „Complete Digital Workflow“

In this combination only available at Schütz Dental

No matter if you are a dental technician, a dentist or an implantologist: Set yourself apart from your competitors. The Complete Digital Workflow by Schütz Dental offers:

- **High level of safety:** Direct data import minimizes the error rate and increases precision.
- **Predictable success:** Include all the necessary criteria for fantastic aesthetics and excellent function from the moment you start to plan.
- **Independence:** The open systems keep the user independent.
- **Better cost efficiency:** Speed up all processes with the direct import of data to the software.
- **Excellent support:** As all components come from the same supplier, you always have the right person at hand to help you.

incl.
3.
axis



High accuracy: Up to 4 µm

Superfast: Full arch scan in 8 sec

High-resolution: Four-camera-system

Tizian Smart-Scan Plus 3.0

A smart and sophisticated dental scanner with excellent function and great style.

With this dental scanning system, you will be able to scan models made of a wide variety of materials and obtain pin-sharp and open STL files. These are the basis for your work subsequently produced with CAD/CAM. The compact system scans your models using a high-precision structured light scanning process. This gives you the flexibility to reproduce almost all dental-relevant materials in great detail, even without the aid of scanning sprays.

Your benefits:

>> Superfast Scanning

Scan with our high quality hardware and the optimized software. Carry out a full arch scan with Tizian Smart-Scan Plus 3.0 in **only 8 sec.**

>> High resolution cameras

Our **5.0 MP** cameras ensure high-resolution detailed scan data. With the four-camera system, the Tizian Smart-Scan Plus 3.0 lab scanner covers a wide scan area, eliminating any blind spots.

>> Auto-elevation

Say goodbye to stacking jigs for the correct scanning position with our auto-elevation feature. For your convenience.

>> High Accuracy

up to 4 µm



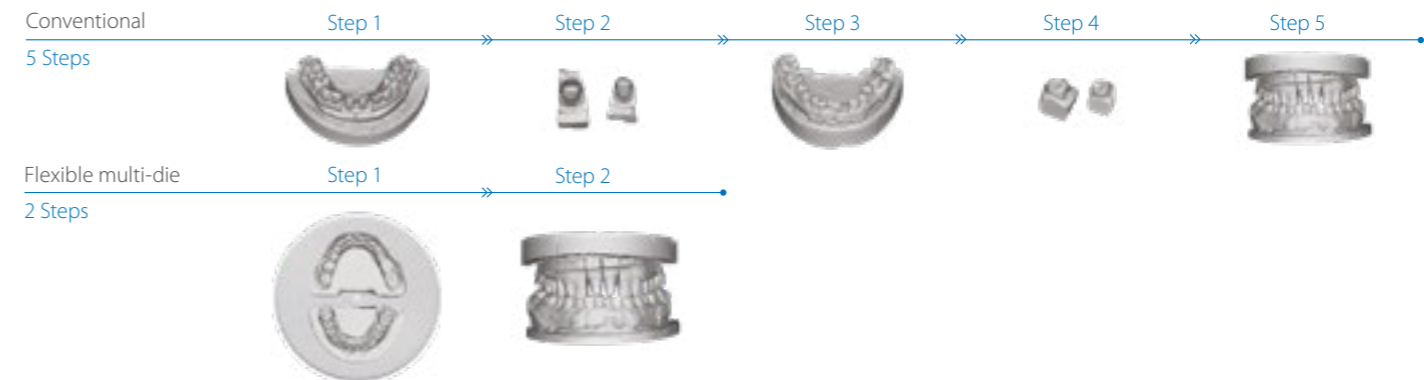
>> Flexible multi-die Scanning

Make your work more efficient by using the flexible multi-die to scan a full-arch or partials with multiple dies simultaneously.

>> Open System

Enjoy the freedom of our open system which allows you to import and export files in STL format so you can design on virtually any software.

Conventional scan vs. Flexible multi-die



Technical data

Accuracy (ISO 12836)	4 µm
Full arch scan speed	8 sec (7 cut)
Full arch impression scan speed	45 sec
Light source	Blue LED, 150 ANSI-lumens
Size	505 mm x 271 mm x 340 mm
Weight	approx. 15 kg

The details listed are examples. We will be glad to provide you with a specific offer. Errors and omissions excepted. Subject to goods being unsold and to changes without prior notice.

SCHÜTZ DENTAL
Micerium Group

www.ubervo.nl



High-Tech from Schütz Dental

Precision, wherever it matters.

Tizian Creativ RT CAD-Software

The key competitive advantage!

Renishaw DS10

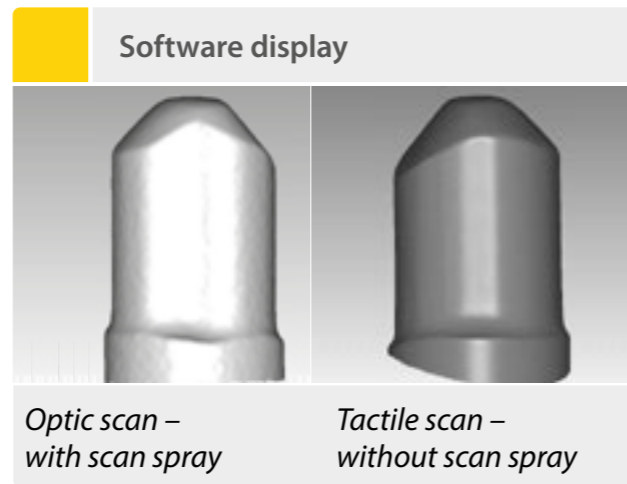
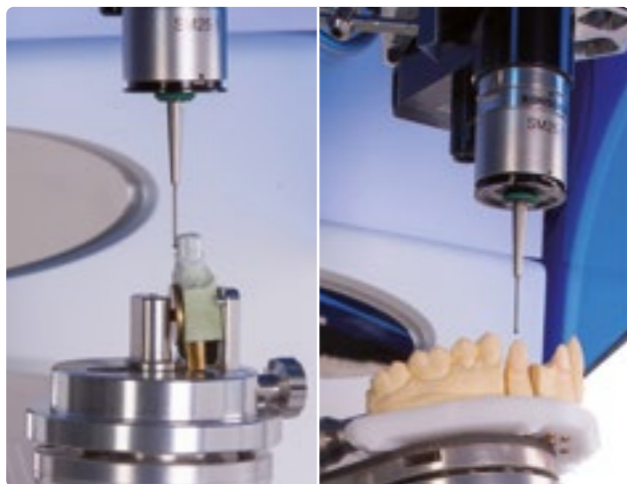
Top-of-the-range tactile dental scanner.

During the tactile scan, the individual stump is scanned with the tactile system and turned into a digital unit with the CAD software. This results in a fast detection with impressive precision.

Dimensions: ca. 30 x 53.5 x 42.4 cm, ca. 15 kg

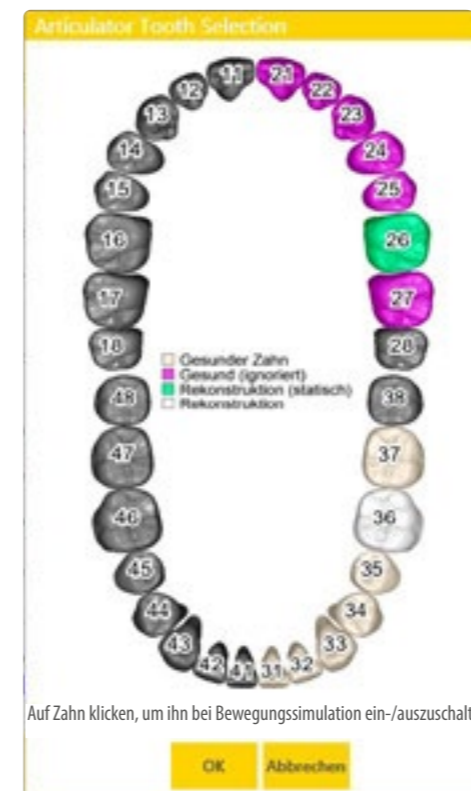
Your benefits:

- >> **Outstanding fit of your telescopic restorations**
- >> **Precision** when scanning non-precious metal telescopes as well as implants, individual stumps, abutments, inlays, onlays
- >> Safely **reproducible results**
- >> Precision as your personal **competitive advantage**
- >> When using a tactile scanner, the **error source** "use of scan spray" is **eliminated**
- >> Scans models, mush-bites, scan bodies, gingiva masks, situ models



High-End software in „real time“.

Tizian Creativ RT CAD Software is a state-of-the-art high-end product. The software's development is ongoing which provides the user with the highest level of reliability for the future.



*Software price does not include the work station.
Pictures may vary.



Your benefits:

- >> **Fast processing:** The system includes a high performance workstation, Quadcore, 64 bit*, especially optimized for this software.
- >> **Flexibility:** Almost every single point of the designed restoration can be modified subsequently.
- >> **Concentrate on what is important to you:** Depending on the type of restoration, substantial parameters are selected automatically.
- >> A high level of **creativity:** Individualize the automatically generated restorations with a multitude of virtual tools.

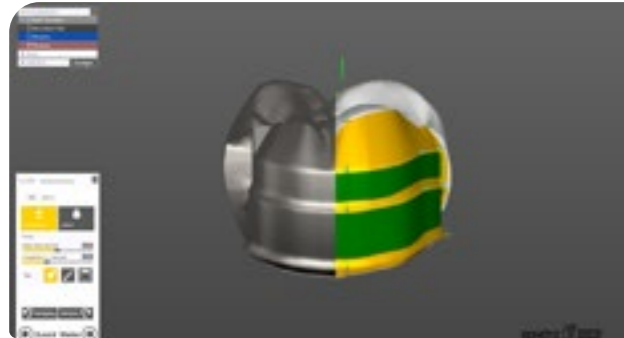
In addition, this software offers:

- >> Wide range of indications
- >> Wide range of materials and easy material selection
- >> Optimized data export for 3-axis, 4-axis, 5-axis machining and laser sintering
- >> Optional additional scans, e.g. gingiva mask or situ model
- >> Save individual parameters
- >> A choice of the below languages:

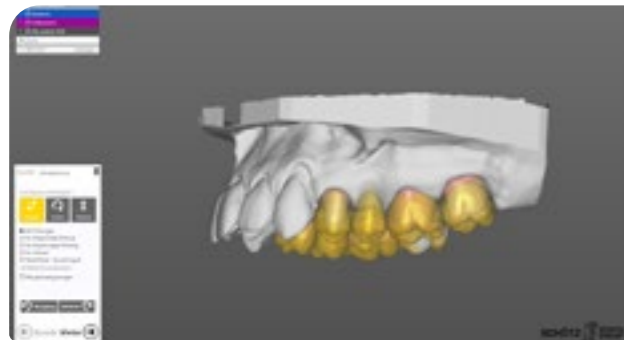


All inclusive

The basic software already includes these great features.



Telescopes 1-2



Crowns, bridges, inlays

The basic software already offers a wide range of options. Further modules can be added as required. Find more information on our large selection of additional modules on the following pages. For a consultation please call our Export Team at +49 (0) 6003 814-362.

The basic software at a glance:

- Telescopes
- Attachments (editable)
- Automatic generation of collars
- Mirror reflection instead of design
- Display of contact points
- Automatic integration of a situ scan
- Inlays, onlays, Maryland bridges
- Use it with compatible touchscreens
- Open interface for open intraoral cameras and import of open STL data
- Free export of STL data
- Automatic adaption in the approximal area and of the opposing jaw
- Crowns, bridges (fully anatomical, reduced), offset copings, overpress copings

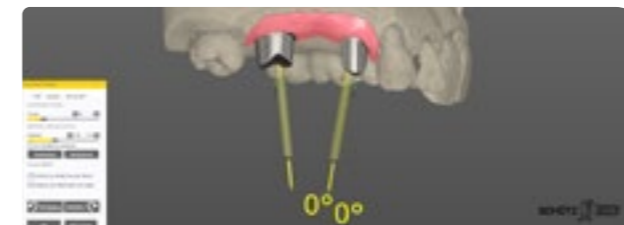
Go one step further with our additional software modules.

Abutments

Don't buy them – design them.



Preshaped abutment fixed inside the machine



Angled implant abutments, buccal



Angled implant abutments, occlusal

Choose from over 170 different abutment types and fashion them with Tizian Creativ RT CAD Software. Find most established implant systems in the software's data base (**adhesive bases, no-lock abutments and lock abutments**).

Design and mill preshaped abutments with your software. The preshaped abutments and their connection to the implant can be individualized. They are manufactured industrially and offer you this great advantage:

- very precise connection between implant and abutment.

Additional Software Module*

Videos



Let the multitude of demo videos at <http://sdent.eu/video> convince you of the extraordinary technology. Or learn more about our products during one of our many courses.

Schütz Dental courses & events



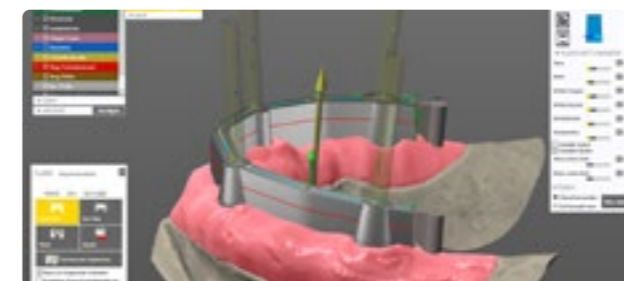
One of our core competencies are training courses. Register for one of our many courses or plan your individual training or event with us: tel. +49 6003 814-362, e-mail: export@schuetz-dental.de

Bars with abutments

Choose from 15 different shapes.

Design individual bar constructions, such as implant-supported bars, with your Tizian Creativ RT CAD Software and this additional software module.

The automatic parallelizing device helps you align the constructions quickly and safely.

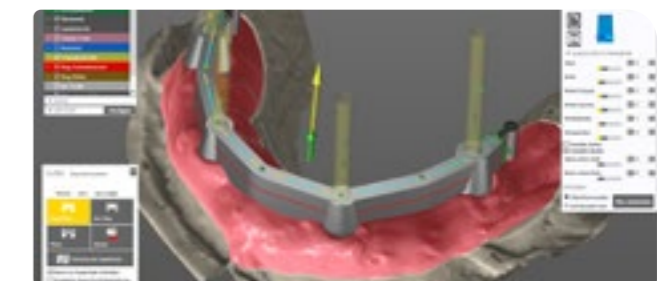


Individual bar design.

Pictures may vary.

**Available for an extra fee.*

¹ Implants with internal hex must only be used for suitable alloys.



Individual bar design.

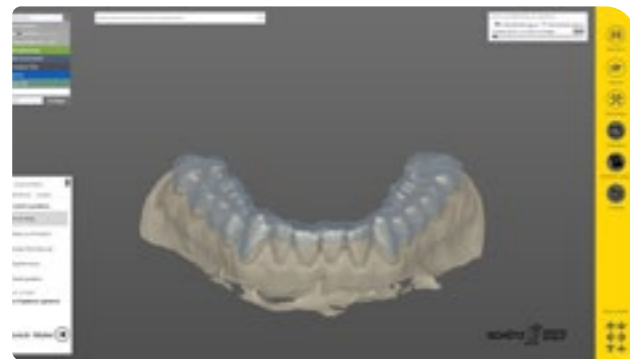
Additional Software Module*

Splint Tool

Precision at the push of a button.

Therapeutic night guards can be designed quickly and in high quality. All relevant patient data is gathered conventionally or with the zebris Functional Jaw Movement Analysis. The attending dentist sends you the data by e-mail. You import it into your software with just

one click. This data will help you design a therapy splint. We recommend using a combination of both Bite Splint Module and Virtual Articulator for optimal patient-specific results. (page 11).



Design occlusal splints easily.

Your options:

- reflex splints
- centric splints
- distraction splints
- night guards
- bleaching splints

TruSmile Technology

Show us your "true smile"!

TruSmile Technology is another optional feature of our software. Photorealistic images let you believe that you are working on a real tooth. Real-time design and construction blur the boundaries between your digital creation and the real work.

Your benefits:

- Save time when designing aesthetic restorations.
- Have more fun with your virtual designs.
- Bring your fully anatomic restorations to perfection.



Display of different tooth shades and materials.



Digital design with a fun factor.

Additional Software Module*

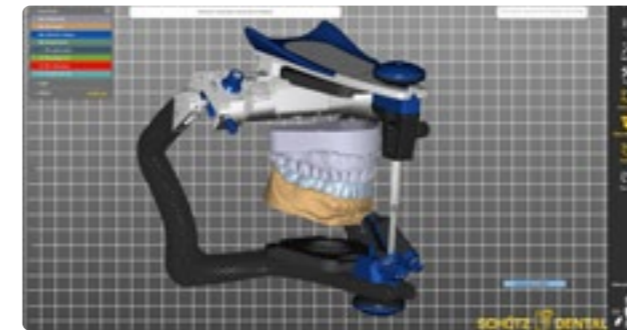
*Pictures may vary.
Available for an extra fee.

Virtual articulator

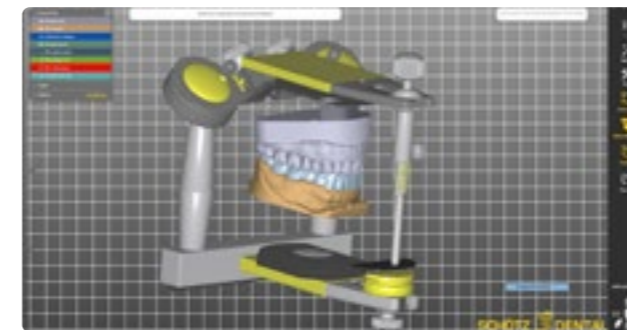
A "must have" for all modern dental labs.

This software module is compatible with several different articulators: SAM® (SAM® Präzisionstechnik GmbH), Baumann (Baumann Dental GmbH), Artex® (Amann Girschbach AG). Or just use a universal articulator. Work with the articulator

of your choice. The Virtual Articulator and the zebris Functional Jaw Movement Analysis device are ideally adjusted to each other. This lets you simulate the jaw movements exactly as they are.



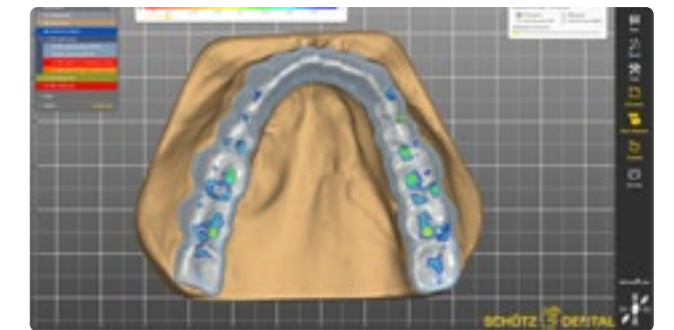
Virtual Articulator Artex.



Virtual Articulator SAM®.

This tool offers many possibilities:

- great time savings
- better functional results
- simpler processes when designing fully anatomical restorations



Contact points

Extended tooth data base

Adapted to Wiedmann and Hajtó.

In addition to the standard tooth sets in the software library, this tool offers a total of 42 anterior tooth sets and one posterior tooth set.



As individual as your patients.

*Pictures may vary.
Available for an extra fee.

Additional Software Module*

DICOM Viewer

An exceptional picture for the complete construction

The comparison of your model and the patient's DICOM data shed an exceptional light on your construction. The data compiled by this



Match your design with the available DICOM data.

software tool is the basis for the design of drilling templates and surgical temporary restorations.

Amongst others, this tool offers you the following amazing benefits:

- Be able to preplan ideal restorations with regard to implant position and bone quality.
- Design your restorations with soft tissues, such as lip volume, in mind.

Additional Software Module*

Eggshell Temporaries

Minimally invasive and true to nature.

Design temporaries for non-invasive or minimally invasive preparations in only three simple steps.

This is how it works:

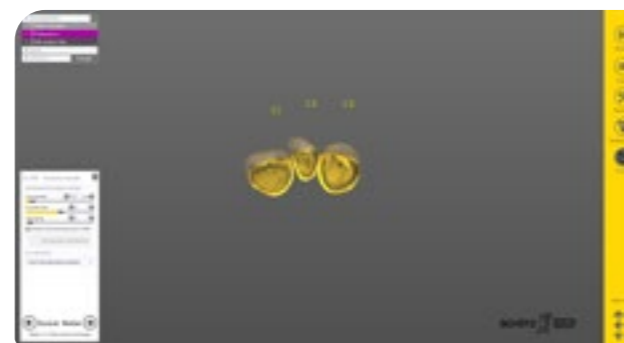
1. Scan the situ model.
2. Upload the desired tooth shape from the tooth library or adopt the original shape. The selected shape is automatically matched with the situ model.
3. Mill the temporary crown, e.g. from a Tizian PMMA Blank.

The excellent temporary restorations can be inserted directly after preparation. An optimal service to the attending dentist.



Wafer-thin temporaries.

The temporaries are based upon the scans of the presurgical situation.



Crowns for minimally invasive preparations.



Bridge designed on a virtual model.

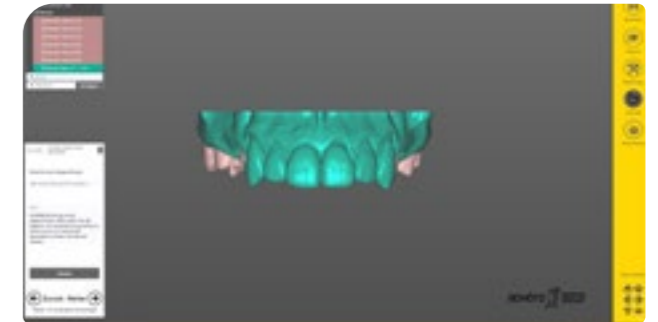
Pictures may vary.
*Available for an extra fee.

Model Creator

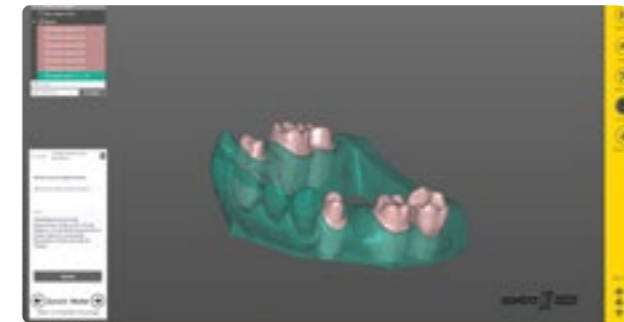
Model management in your hands.

Some of your customers already work with intraoral scanners. This tool helps you produce the according saw-cut models. The software creates the chamfers automatically. Afterwards, you mill the model with your Tizian Cut 5 or Tizian Cut 5 smart milling machine.

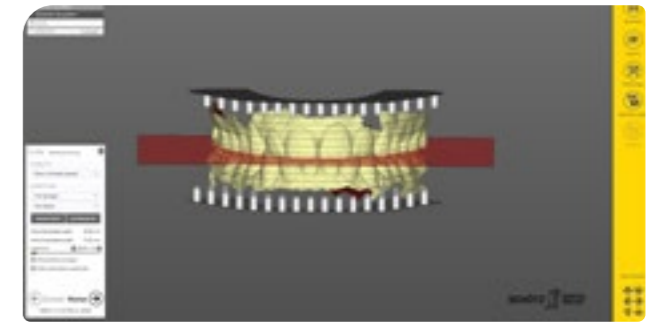
Choose the Model Creator that best suits your way of work.



Stumps placed into the model.



Stumps and tooth rim are milled separately.



The tooth rim is produced with the according retentions and is sawn subsequently.

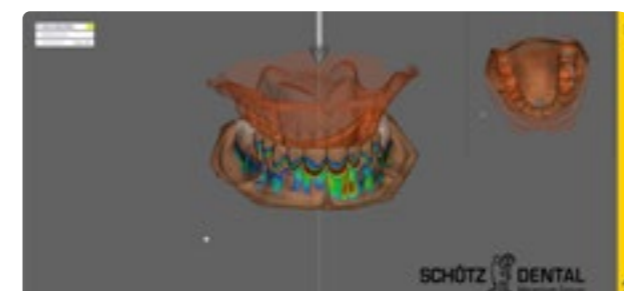
Framework Tool

Digital framework.

Design telescopic frameworks and clasp-fixed frameworks with the Tizian Framework Tool. By means of the complete integration into the digital workflow of your Tizian system, frameworks with an outstanding fit are produced

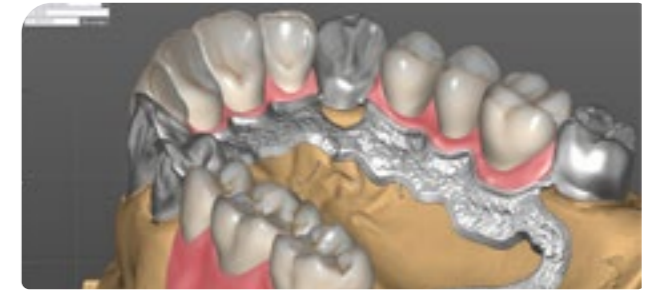
in no time. Be one of the first labs to benefit from working with this innovative tool.

We will keep you updated. Find us on Facebook or subscribe to our exclusive newsletter.



Highly precise display of undercuts based on the insertion direction.

Pictures may vary.
*Available for an extra fee.



Easy and quick design of individual frameworks.

Additional Software Module*

Smile Design

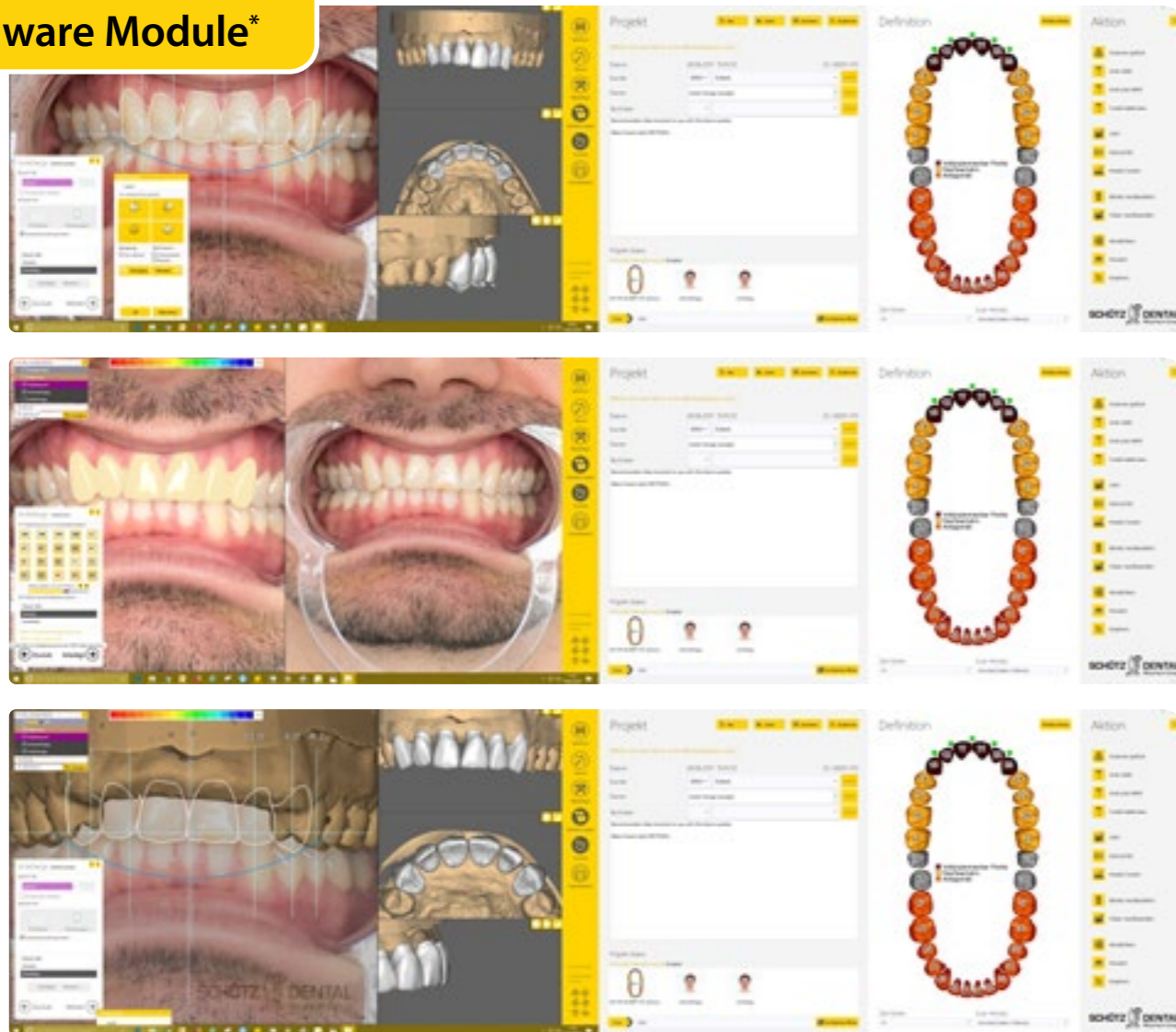
2D and 3D, the best of both worlds.

An easy solution for aesthetic planning that leads to more predictable results. Combine patient photos, outlines and 3D situations.

Your options:

- Load patient photos in your Tizian Creativ RT software. These will automatically be converted to 3D objects, which can be matched to 3D scans of the teeth.
- Automatically add and edit guidelines
- Select tooth shapes from our extensive library
- Use simple 2D editing tools to edit the 3D shapes
- See the 3D result in real-time from various angles

Additional Software Module*



Individual pre-planning to visualize the final aesthetic restoration.

*Pictures may vary.
Available for an extra fee.

exoplan with Guide Creator

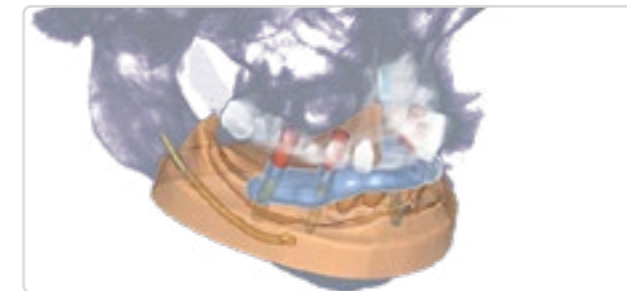
High-performance software solution for your implant planning

Provides dental labs, dentists, implant specialists and surgeons with maximum flexibility.

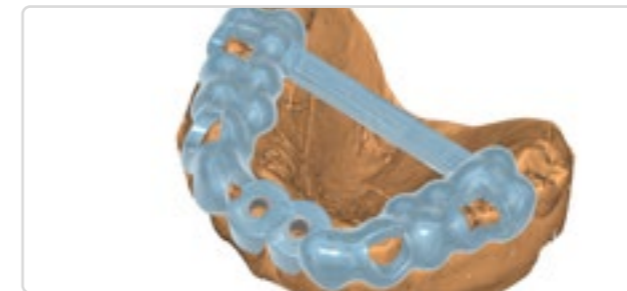
Based on the renowned exocad platform, exoplan guarantees a seamless digital workflow and the highest usability and performance.

Thanks to the open, vendor-neutral software architecture, the most open 3D scanners, 3D

printers or milling machines can be used. The integrated software solutions guarantee the seamless functionality of the digital workflow – from virtual, prosthetic-oriented implant planning with exoplan to designing surgical guides with the Guide Creator.



Safe implant planning and surgical guide design.



Produce surgical guides in-house - with the Guide Creator.

Guide Creator

Visualize, plan, create

In-house surgical guides – with Guide Creator module

Design your own surgical guides, and manufacture them in-house with your 3D printer or milling machine to maximize the return on hardware investments. Thanks to the standard data format STL, you have the freedom to choose your hardware and production center.

*Pictures may vary.
Available for an extra fee.

Benefits for your dental lab

- >> **Expand your service offerings:** exoplan enables implant planning and surgical guide designs for in-house production
- >> **Reduce rework and corrections**
- >> **Create predictable restorations:** exoplan accesses exocad's comprehensive library of over 2000 prosthetic components
- >> **Work with your existing equipment:** exoplan supports file formats for open 3D printers and milling machines for surgical guide production
- >> **Improve collaboration:** exoplan facilitates the communication with your clients for improved and predictable outcomes
- >> **Integrate workflows seamlessly:** exoplan interoperates with exocad's DentalCAD
- >> **Profit from an unlimited number of cases:** exoplan has no hidden costs or click fees

Request your individual offer now.

**We look forward to your call.
Tel. +49 (0) 6003 814-362**



Tizian JMA Optic by zebris
Safe prosthetics.

The new dimension of the function-oriented digital workflow

Welcome to the world of functional digital dentistry

Precise, safe, quick and economic! Based upon a light optics procedure, the system records the condyle movements and all six movement directions of the lower jaw with extremely high precision.

Make an appointment now!

Call us now at
+49 6003 814-362

or send us an e-mail at
export@schuetz-dental.de
to arrange a free demo appointment.

Your benefits:

- Reliable prosthetics
- Forensic transparency
- Documentation
- Happy patients
- Digital image for your practice
- Decisive competitive advantage

Milling machines and Sintering Furnaces

Selection of milling machines

Sintering Furnaces

Tizian 1.5 Pro



The compact system to cover most tasks!

Tizian Furnace 100



The „compact“ system.

Tizian 3.5 Loader Pro+



*With 8-fold blank changer**

The high-precision powerhouses.

Sinter oven HT-2/M/Zirkon-120



The high performer

CORiTEC 650i



For the highest aspiration level.

www.ubervo.nl

Visit us online.

Pictures may vary.
*This milling machine is also available without fully automatic blank changer.

Schütz CAMPUS



Visit one of our CAD/CAM courses.

The topic of "digitization" has become an integral part of dentistry. Take part in these developments and let us inspire you with innovative concepts for practices and laboratories.

Whether you are a dental technician, dentist or implantologist, consider continuing education for you and your team. Inspire your customers, motivate your employees and invest in your future today.

Register now for one of our courses.

This is what we offer:

- >> Exciting live previews
- >> Practical hands-on courses
- >> Individual trainings for you and your team
- >> From users for users

Your benefits:

- >> The latest techniques and procedures
- >> Most modern machines
- >> From users for users
- >> Workshop character and professional exchange with your peers

Or ask your distributor for individual courses
www.ubervo.nl



*An investment
 in knowledge
 pays the best interest.*

- Benjamin Franklin

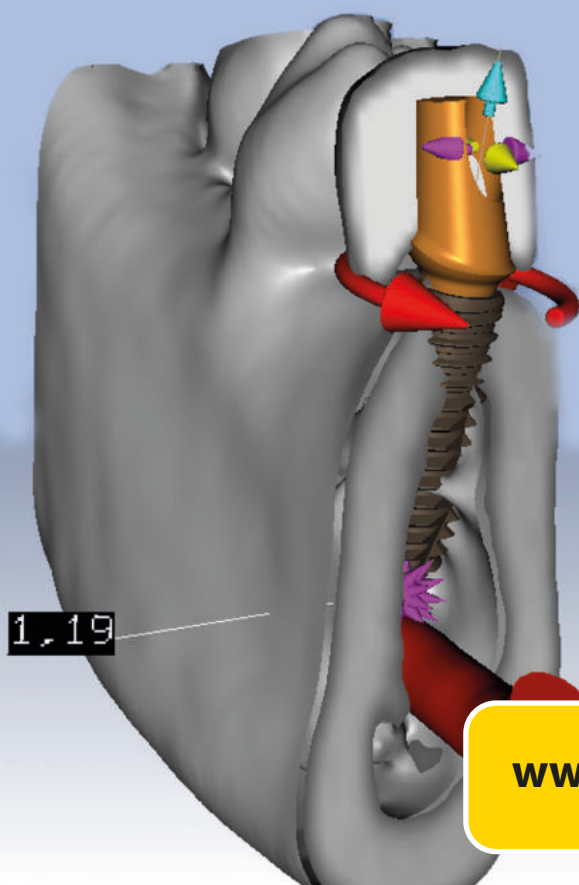
Ask for our special brochures

Tizian CAM Milling machines Just Mill it	Tizian JMA Optic by zebris Real Movement in Functional Digital Dentistry	IMPLA meets zebris Function in Implantology	Dental Technology
Futura Series High-end denture materials	Bonding Products ...to bond whatever you want.	Extended Layering Instructions dialog Vario	IMPLA The System
For Your Dental Practice Analog meets Digital	Bleach'n Smile Chairside Bleaching	Capo Bulk Fill Quick, Easy and Safe	Capo Slow Flow Flowable composite with excellent physical properties

SCHÜTZ DENTAL
 Micerium Group
www.ubervo.nl



Since 1963



IMPLA

www.ubervo.nl



CONTACT

uberVo dental b.v.
Electronweg 10d
1627 LB Hoorn NH NL
T. +31 (0)229 213
info@ubervo.nl
www.ubervo.nl

importeur | distributeur

SCHÜTZ  **DENTAL**
Micerium Group

uberVo
DENTAL B.V.

uberVo dental b.v. • Electronweg 10d • 1627 LB Hoorn NH • Tel. +31 (0) 229 213 736
www.ubervo.nl • info@uberv.nl

Waitkewitsch 08/2021